



Demographic and Income Profile

Oliver Springs Town, TN 3
Oliver Springs Town, TN (4755800)
Geography: Place

Prepared by Anderson County Chamber

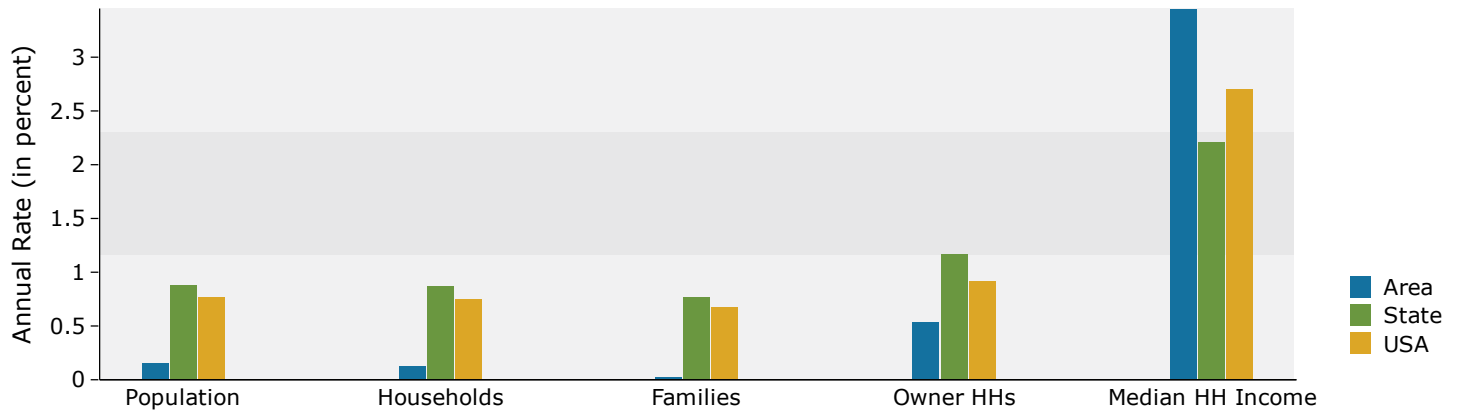
Summary	Census 2010	2019	2024				
Population	3,344	3,370	3,397				
Households	1,384	1,389	1,398				
Families	930	953	954				
Average Household Size	2.42	2.43	2.43				
Owner Occupied Housing Units	986	998	1,025				
Renter Occupied Housing Units	398	391	373				
Median Age	41.6	44.7	45.4				
Trends: 2019 - 2024 Annual Rate	Area	State	National				
Population	0.16%	0.88%	0.77%				
Households	0.13%	0.87%	0.75%				
Families	0.02%	0.77%	0.68%				
Owner HHs	0.54%	1.17%	0.92%				
Median Household Income	3.45%	2.21%	2.70%				
Households by Income	2019		2024				
	Number	Percent	Number	Percent			
	<\$15,000	183	13.2%	151	10.8%		
	\$15,000 - \$24,999	210	15.1%	180	12.9%		
	\$25,000 - \$34,999	184	13.2%	166	11.9%		
	\$35,000 - \$49,999	173	12.5%	166	11.9%		
	\$50,000 - \$74,999	263	18.9%	271	19.4%		
	\$75,000 - \$99,999	193	13.9%	213	15.2%		
	\$100,000 - \$149,999	90	6.5%	114	8.1%		
	\$150,000 - \$199,999	63	4.5%	100	7.1%		
\$200,000+	30	2.2%	39	2.8%			
Median Household Income	\$44,170		\$52,331				
Average Household Income	\$60,657		\$71,714				
Per Capita Income	\$24,874		\$29,402				
Population by Age	Census 2010		2019		2024		
	Number	Percent	Number	Percent	Number	Percent	
	0 - 4	187	5.6%	162	4.8%	162	4.8%
	5 - 9	232	6.9%	178	5.3%	175	5.2%
	10 - 14	233	7.0%	189	5.6%	193	5.7%
	15 - 19	200	6.0%	195	5.8%	190	5.6%
	20 - 24	154	4.6%	167	5.0%	155	4.6%
	25 - 34	406	12.1%	394	11.7%	367	10.8%
	35 - 44	389	11.6%	412	12.2%	439	12.9%
	45 - 54	507	15.2%	415	12.3%	402	11.8%
	55 - 64	485	14.5%	513	15.2%	472	13.9%
	65 - 74	313	9.4%	456	13.5%	491	14.5%
	75 - 84	180	5.4%	213	6.3%	266	7.8%
	85+	58	1.7%	78	2.3%	84	2.5%
Race and Ethnicity	Census 2010		2019		2024		
	Number	Percent	Number	Percent	Number	Percent	
	White Alone	3,172	94.9%	3,172	94.1%	3,181	93.6%
	Black Alone	83	2.5%	76	2.3%	80	2.4%
	American Indian Alone	5	0.1%	6	0.2%	7	0.2%
	Asian Alone	12	0.4%	20	0.6%	24	0.7%
	Pacific Islander Alone	1	0.0%	3	0.1%	4	0.1%
	Some Other Race Alone	7	0.2%	6	0.2%	7	0.2%
	Two or More Races	64	1.9%	87	2.6%	95	2.8%
	Hispanic Origin (Any Race)	20	0.6%	36	1.1%	43	1.3%

Data Note: Income is expressed in current dollars.

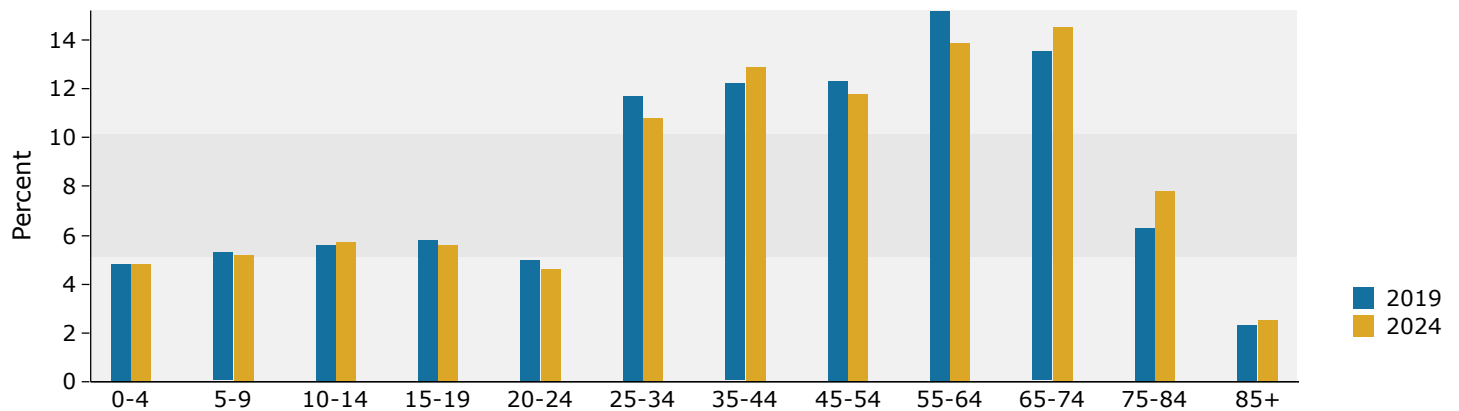
Source: U.S. Census Bureau, Census 2010 Summary File 1. Esri forecasts for 2019 and 2024.

April 02, 2020

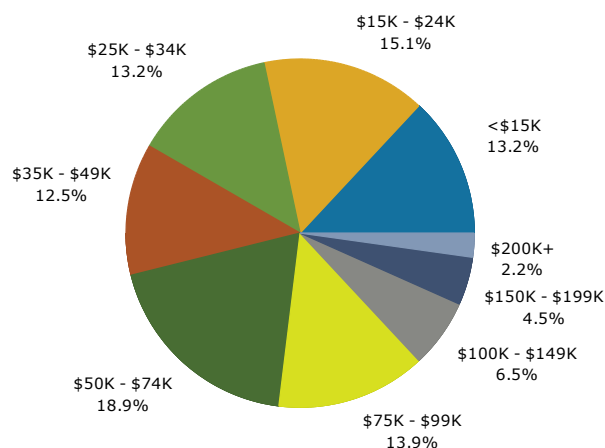
Trends 2019-2024



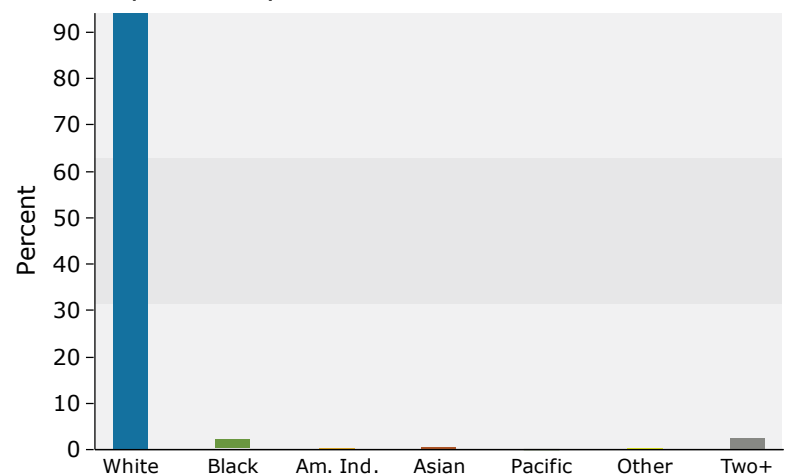
Population by Age



2019 Household Income



2019 Population by Race



2019 Percent Hispanic Origin: 1.1%